

FLOJET®

FLOJET®

No 29

Recreation Vehicle Pumps & Accessories

Earned and awarded the ISO 9001 Certification for its quality system, ITT Flojet has been committed to providing quality products and services worldwide. With over 30 years experience, FLOJET is dedicated to serving you, the customer, with representatives worldwide, with an additional sales and manufacturing facility in the United Kingdom.

Flojet



ITT Industries
Engineered for life

Flojet **1-800-2 FLOJET**
20 Icon, Foothill Ranch, CA 92610
Tel: +1 949 859 4945 Fax: +1 949 859 1153

USA

Flojet
Bingley Road, Hoddesdon, Hertfordshire EN11 0BU
Tel: +44 (0) 1992 450 145 Fax: +44 (0) 1992 467 132

UK

Fluid Products Canada,
55 Royal Road, Guelph, Ontario N1H 1T1
Tel: +1 519 821 1900 Fax: +1 519 821 2569

CANADA

NHK Jabsco Co Ltd,
3-21-10, Shin-Yokohama, Kohoku-ku, Yokohama 222
Tel: +81 (0) 45 475 8906 Fax: +81 (0) 45 475 8908

JAPAN

Jabsco GmbH,
Oststraße 28, 22844 Norderstedt
Tel: +49 (0) 40 53 53 73 0 Fax: +49 (0) 40 53 53 73 11

GERMANY

Jabsco Marine Italia S.r.l.,
Via Tommaseo, 6, 20059 Vimercate, Milano
Tel: +39 039 6852323 Fax: +39 039 666307

ITALY

Go RVing
Life's A Trip™

Your Local Flojet Distributor

Discover Flojet at www.flojet.com

Warranty: All products of the company are sold and all services of the company are offered subject to the company's warranty and terms and conditions of sale, copies of which will be furnished upon request

© Copyright 2005 ITT Industries

P/N F100-087 Rev C 10/2005



ITT Industries
Engineered for life



Company Profile & Contents

Flojet, Jabsco, and Rule, all divisions of ITT Industries, join to offer the highest quality products available in the Recreation Vehicle market place. A broad line of Flojet water system pumps and accessories combine with the popular Jabsco toilets and pumps, to create a quality product line, rich in the heritage of recreation vehicles. Rule winches and chemicals are a valuable new addition. With sales and manufacturing facilities in both the United States and United Kingdom, and representatives around the world, we are committed to offering the finest products and service available.

Constant Pressure Water Systems

Platinum VSD™ and Sensor VSD.....	1
Quiet Pump™ Controller.....	1

Water System Pumps

Automatic & Manual Demand Pumps

Triplex	2
LF 12 Series Pumps	2

Quad II Water System Pumps Quiet Quad

4406 and 4306 Series Pumps and Parts	3
--	---

Deluxe Water System 3.5 gpm (13.5 lpm)

NEW! Premium Model and Parts	4
------------------------------------	---

Duplex Water System Pumps

2100 Series Pumps and Parts	4
-----------------------------------	---

Premium Plus 4.5 gpm (17 lpm) Water System Pumps

4325 Series Heavy Duty Water System and Parts	5
Electric Pump and Faucet.....	5

High Volume Water System Pumps

2840 Series and Parts	6
NEW! 2880 Series	6

Automatic Water System Pumps

36950 Series and Parts	7
------------------------------	---

Accumulator Tanks

30573, 18810, 12573 Models.....	8
---------------------------------	---

Toilets and Macerator Pumps

NEW! Portable RV Waste Pump	9
18550 Macerator Pump.....	9
NEW! 37075 Designer Style Electric Toilets	9

Accessories

NEW! Model 1740 Inlet Strainers, Water Pressure Regulators, High Pressure Check Valve	10
--	----

Quad Port Fittings

.....	11
-------	----

Remote Control Searchlights

NEW! 8055, 8035 and 8046 Models.....	12
NEW! RV Broad Beam, 62026 Models & Wiring Cable Accessories	13

Work, Flood and Patio Lights

45960 and 45900 Models.....	14
-----------------------------	----

Oil Drain and Heater Pumps

NEW! Engine Oil Change System	15
Compact Magnetic Drive Centrifugal Sealless Heater Pump	15

Bottled Water Dispenser

.....	16
-------	----

Danforth™ Compasses

Danforth™ Quest Compasses.....	17
--------------------------------	----

Sudbury® Sealants

Sudbury® Sealants	17
-------------------------	----

Sudbury® Boat/RV Care Products

One Step Fiberglass Restorer and Wax Aqua Fresh!™, Boat Zoap™	18
--	----

Electric Winches & Accessories


Winches, Cable Disconnect Kits, Roller Fairlead Kits and Pulley Blocks	19
---	----

PEXtite™ Plumbing System

.....	20-28
-------	-------

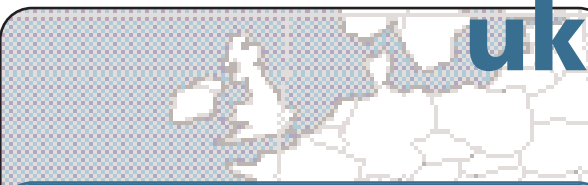
Product Number Index

.....	29
-------	----



usa

Flojet, 20 Icon, Foothill Ranch, CA 92610 USA
Tel: +1 949 859 4945 Fax: +1 949 859 1153




uk

Jabsco, Bingley Road, Hoddesdon, Hertfordshire EN11 0BU
Tel: +44 (0) 1992 450 145 Fax: +44 (0) 1992 467 132




canada

Fluid Products Canada, 55 Royal Road, Guelph, Ontario N1H 1T1
Tel: +1 519 821 1900 Fax: +1 519 821 2569



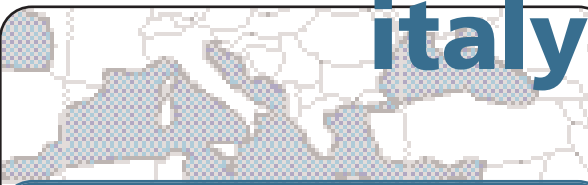
japan

NHK Jabsco Co Ltd, 3-21-10, Shin-Yokohama, Kohoku-ku, Yokohama 222
Tel: +81 (0) 45 475 8906 Fax: +81 (0) 45 475 8908



germany

Jabsco GmbH, Oststraße 28, 22844 Norderstedt
Tel: +49 (0) 40 53 53 73 0 Fax: +49 (0) 40 53 53 73 11



italy

Jabsco Marine Italia S.r.l., Via Tommaseo, 6, 20059 Vimercate, Milano
Tel: +39 039 6852323 Fax: +39 039 666307



Constant Pressure Water Systems

5 Chamber Platinum VSD™

Five chamber positive displacement diaphragm design. Self-priming up to 10 feet (3 m) suction lift. Pump able to run dry without damage. Removable port adapters. Permanent magnet, double ball bearing armature. Electronic speed control built into base housing.

- Variable speed control
- Solid state pressure sensor
- Smooth operation / no cycling
- 12VDC and 24VDC models available
- Controls flow and maintains pressure by changing motor speed
- Speeds up as demand increases
- Self-priming / runs dry
- No accumulator tank needed
- Includes high flow inlet strainer
- Protected under U.S. Patents #6 607 360 and 6 729 849
- Other patents pending
- ISO 8846 MARINE (Ignition protection)

Fitting: Strainer and ports included.

Weight: R6806145 - 8.0 lb (3.6 kg)
R6806345 - 8.0 lb (3.6 kg)

R6806145 Sensor VSD™ 6, 12 Volt dc.

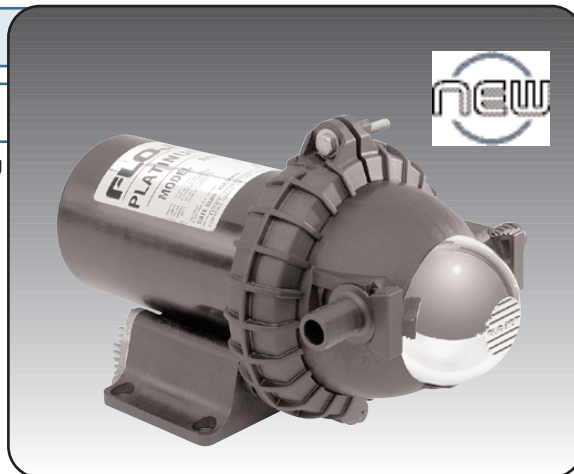
R6806345 Sensor VSD™ 6, 24 Volt dc.

81000 401 Instruction Sheet.

20409 043 Service Kit.

Note: The VSD electronics require a battery installed in the DC power supply when using an AC to DC converter or battery charging system.

CE Certified CSA Listed



Model	Volts dc	Open Flow gpm (lpm)	Pressure On/Off	Amps @ 10 psi (0.7 bar)	Strainer Included
R6806145	12V dc	6	60 psi	18	Yes
R6806345	24V dc	6	60 psi	9	Yes

Sensor VSD™

New pressure sensor controlled. Amp draw reduces as flow reduces to conserve energy, ranging from less than 1 amp to a maximum of 12 amps.

- Runs silently under normal use.
- Unique constant water pressure - NO pressure switch.
- Electronically controlled variable flow.
- Up to 4.5 gpm (17 lpm) output.
- Self priming up to 10ft (3m).
- Gives constant flow and hot water mix.
- Eliminates accumulator tank.
- Automatically adjusts to 12 Volt dc or 24 Volt dc power input.
- Conserves battery power - uses lower amps at lower flow.
- True sensor regulated water pressure.
- Thermal overload protection.
- Diaphragm design allows extended dry running.

Fitting: Strainer and ports included.

Size: R4515 - 9.0" L x 6.3" W x 3.75" H (22cm x 16cm x 9.5cm)
R4525 - 10.3" L x 6.3" W x 3.75" H (25.2cm x 16cm x 9.5cm)

Weight: R4515 - 4.3 lb (2.0 kg)
R4525 - 6.3 lb (3.0 kg)

R4515 743A Sensor VSD™ 3.7, 12 - 24 Volt dc.

R4525 743A Sensor VSD™ 4.5, 12 - 24 Volt dc.

81000 346 Instruction Sheet.

20409 043 Service Kit.

Note: Sensor VSD™ pumps require a battery to be installed in the dc power supply when using an ac to dc converter or battery charging system.

CE Certified CSA Listed



Model	Volts dc	Open Flow gpm (lpm)	Pressure On/Off	Amps @ 10 psi (0.7 bar)	Strainer Included
R4515	12V -	0-3.7	25/35 psi	9	Yes
	24V dc	(0-14)	1.7/2.4 bar		
R4525	12V -	0-4.5	30/40 psi	7	Yes
	24V dc	(0-17)	2.1/2.8 bar		

Quiet Pump™ Controller

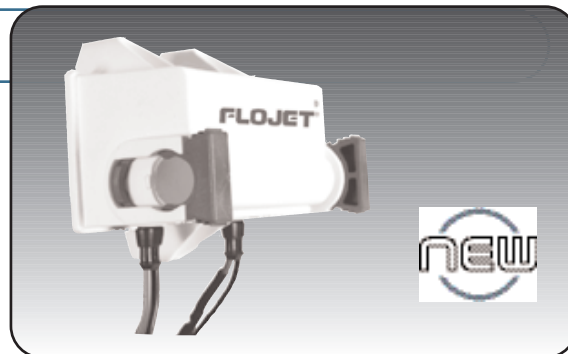
Converts switch type water pressure pumps to variable speed drive VSD

- Greatly Reduces Noise.
- Eliminates pulsation.
- Maintains smooth water flow.
- Regulates pressure at faucets.
- Auto-Alignment - Sense pump pressure automatically.
- Operates on pumps with pressures from 20 - 60 PSI (1.4 bar - 4.2 bar).
- Easy installation
- Works on most brands of switched diaphragm pumps.

Size: 3" L x 4.5" W x 3.5" H

Weight: 1.5 lb (0.68 kg)

Model: 01770 100 - 12 / 24 VSD



Sensor VSD™ Water System Pumps



Water System Pumps

Automatic and Manual Demand Pumps

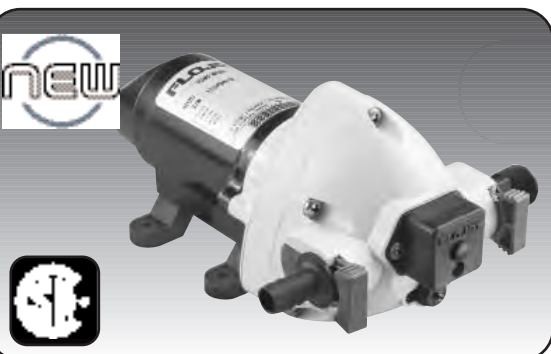


The Triplex 2.9 Water System, New from FLOJET

- Smooth flow and quiet operation for up to 5 fixtures
- Designed to fulfill the water pressure requirements for the majority of recreational vehicles
- Smooth flow from 0.7 gpm to 2.9 gpm (2.6 to 11.0 lpm)
- Built-in "Pulsation Eliminator" to reduce the cycling and noise
- No need for an accumulator tank
- Runs dry and self-primers to 9 ft. (3m)
- Easy to install, winterize and service

Model: 03526
Diaphragm: Santoprene
Valves: EPDM Rubber
Size: 4-3/4" H x 6" W x 9" L (121x 152 x 229 mm)
Weight: 3.5 lb. (1.6 kg)
Pump Head kit: 20406 045A
Inst. Sheet: 81000 384

Model	Volts dc	Open Flow gpm (lpm)	Pressure On/Off psi (bar)	Amps @ 10 psi (0.7 bar)	Strainer Included
03526 144	12	2.9 (11)	50 (3.45)	4.4	No
R3626 344	24	2.9 (11)	40 (2.76)	3	No



The Triplex 2.0 Caravan/RV Pump, New from FLOJET

- Smooth flow from 0.65 to 2.0 gpm (2.5 to 8 lpm)
- Pressure controlled to below 25 psi (1.7 bar)
- New Feature: Built-in pulsation eliminator
- Runs dry without damage
- Self priming to over 6 feet (2m)
- Includes plug-in ports for easy installation; threaded and hose barb
- CE Certified

Diaphragm: Santoprene
Valves: EPDM Rubber
Size: 4-3/4" H x 6" W x 9" L (121x 152 x 229 mm)
Weight: 3.5 lb. (1.6 kg)
Pump Head kit: 20406 048A
Inst. Sheet: 81000 384

Model	Volts dc	Open Flow gpm (lpm)	Pressure On/Off psi (bar)	Amps @ 10 psi (0.7 bar)	Strainer Included
R3426 148	12	2.0 (8.0)	25 (1.7)	3.5	No
R3426 348	24	2.0 (8.0)	25 (1.7)	1.7	No



LF-12 Series Pumps

- Compact automatic demand water system pump
- Supplies up to 3 fixtures, one or two at a time
- Built-in pressure switch auto-matically starts and stops pump when faucet is opened and closed
- Self-priming so pump can be located above water tank
- Runs dry for extended periods of time
- Built-in thermal protector
- Also available without switch for manual application
- IAPMO and CSA listed

Size: 2-1/4" H x 3-1/2" W x 6-1/4" L (58 x 89 x 157 mm)
Weight: 1.3 lb (.6 kg)
Inst. Sheet: 81000 309

Model	Volts dc	Open Flow gpm (lpm)	Pressure On/Off psi (bar)	Amps @ 10 psi (0.7 bar)	Strainer Included
LF122 202	12Vdc	1.1 (4.3)	22/35 psi (1.5/2.4 bar)	1.9	No
LF122 202	12Vdc	1.1 (4.3)	N/A	1.9	No



Quad II Water System Pumps 'Quiet Quad'

4406 Series Pumps with Bypass

- Includes bypass valve which greatly reduces pulsating water and pressure switch chatter
- Smooth flow from 1 gpm to over 3.2 gpm (3.8 to over 12.1 lpm)
- Eliminates the need for an accumulator tank
- Designed for up to 5 fixtures
- Runs dry without harm to the pump
- Easy to install, service and winterize
- Includes plug in ports for easy installation:
 - Two 1/2"-14 straight pipe ports
 - Two 1/2"-(13mm) hose barb ports
- Install a Flojet water strainer to protect pump from debris (not included, see page 9)
- IAPMO & CSA listed (12 Volt dc)

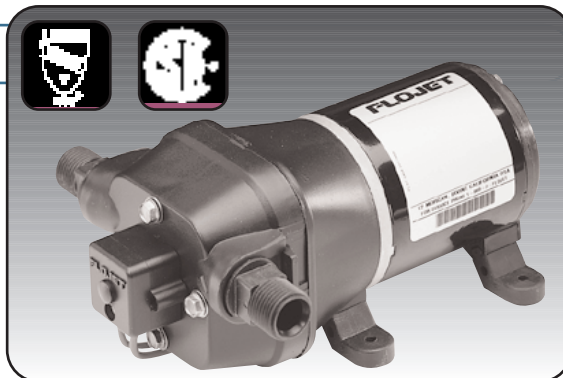
Size: 3.75" H x 6.3" W x 9.9" L
(95 x 160 x 252 mm)

Weight: 3.9 lb. (1.8 kg.)

Pressure: 22 - 35 psi
(1.5 - 2.4 bar)

Service kit: 20409 043

Inst. Sheet: 81000 233



Model	Volts	Open Flow gpm (lpm)	Pressure On/Off	Amps @ 10 psi (0.7 bar)	Strainer Included
04406 143	12V dc	3.2 (12.1)	22/35 psi	3.9	No
IAPMO Listed			(1.5/2.4 bar)		
R4406 343	24V dc	3.3 (12.5)	22/35 psi	2.0	No
CE Model			(1.5/2.4 bar)		
04406 043	115V ac	3.3 (12.5)	22/35 psi	0.4	No
			(1.5/2.4 bar)		

WARNING



Pumps are not to be used for pumping gasoline or flammable liquids. Explosion and death could occur.

4306 Series Pumps The Universal Replacement Pump

- Smooth water flow to over 3.2 gpm (12.1 lpm)
- Designed for up to 5 fixtures
- Runs dry without harm to the pump
- Easy to install, service and winterize
- Recommended for use with accumulator tank
- Includes plug in ports for easy installation:
 - Two 1/2"-14 straight pipe ports
 - Two 1/2" (13mm) hose barb ports
- Install a Flojet water strainer to protect pump from debris (not included, see page 9)
- IAPMO & CSA listed (12 Volt dc)

Note: See Accumulator Tanks on page 8

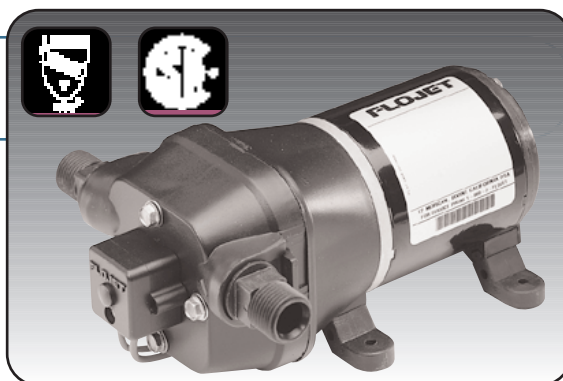
Size: 3.75" H x 6.3" W x 8.6" L
(95 x 160 x 218 mm)

Weight: 3.9 lb. (1.8 kg.)

Pressure: 22 - 35 psi
(1.5 - 2.4 bar)

Service kit: 20409 043

Inst. Sheet: 81000 232

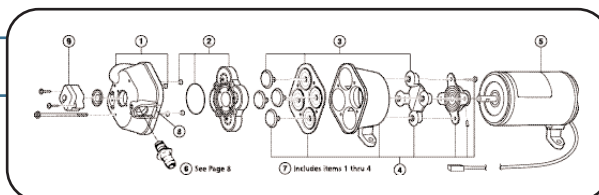


Model	Volts dc	Open Flow gpm (lpm)	Pressure On/Off	Amps @ 10 psi (0.7 bar)	Strainer Included
04306 500	12	3.2 (12.1)	22/35 psi	4.0	No
IAPMO Listed			(1.5/2.4 bar)		
R4306 501	24	3.3 (12.5)	22/35 psi	1.8	No
CE Model			(1.5/2.4 bar)		

QUAD II Service Parts

* Requires new mounting feet (kit 20717 100A) when used with three-footed Quad pumps.

† Add "R" to motor no. for CE certified model (i.e., R2009 076A).



KEY	1	2	3	4	5	7	8	9
Model	Upper Hsng	Valve Assy	Diaphragm	Lower Hsng	Motor †	Pump Head	Side Clips	Prsr Switch Kit
4306 500	20404 009	20407 030	20403 040	20419 001	2009 076A*	20406 008A	20408 000	2090 104
4306 501	20404 009	20407 030	20403 040	20419 001	2019 024A*	20406 008A	20408 000	2090 104
4406 043	20404 000	20407 030	20403 040	20419 001	2029 087A	20406 001A	20408 000	2090 104
4406 143	20404 000	20407 030	20403 040	20419 001	2009 076A*	20406 001A	20408 000	2090 104
4406 343	20404 000	20407 030	20403 040	20419 001	2019 024A*	20406 001A	20408 000	2090 104



Water System Pumps

Deluxe Water System 3.5 gpm (13.5 lpm)



Model	Volts dc	Open Flow gpm (lpm)	Pressure On/Off 10 psi (0.7 bar)	Amps @ 10 psi (0.7 bar)	Strainer Included
4305 144A	12	3.5 (13.5)	20/40 psi 1.4/2.8 bar	5.0	Yes

Premium Model

- New larger motor for more power
- Delivers over 3.5 gpm (13.5 lpm)
- Provides higher pressure to all fixtures
- Improves a low flow, low pressure system
- Model 'A' includes strainer

Size: 3.75" H x 6.3" W x 8.6" L (95 x 160 x 218 mm)
Shp. Wt: 4.5 lb. (2.1 kg.)
Pressure: 20 - 40 psi (1.4 - 2.8 bar)
Service kit: 20409 043
Inst. Sheet: 81000 267



Recommended Package

- Use the Pressurized 1 Litre Accumulator Tank 30573 0001A, for a smooth steady flow. See page 8.

Duplex Water System Pumps



Model	Volts dc	Open Flow gpm (lpm)	Pressure On/Off psi (bar)	Amps @ 10 psi (0.7 bar)	Strainer Included
2100-12	12	2.3 (8.7)	15/27 (1/1.9)	2.5	No
2100-740	24	2.3 (8.7)	15/27 (1/1.9)	1.5	No
2100-750**	12	2.3 (8.7)	15/27 (1/1.9)	2.5	No
2100-916*	12	1.4 (5.3)	8/12 (0.6/0.8)	1.9	No
2100-919 ²	12	1.3 (4.9)	30/45 (2.1/3.2)	2.5	No

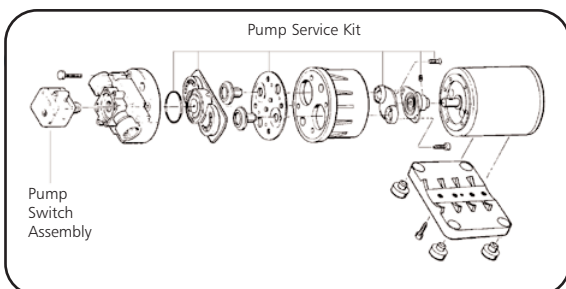
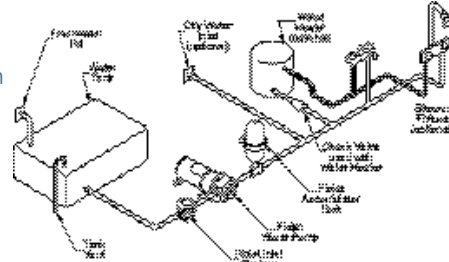
*Low pressure export model **Includes fuse holder and 7 Amp fuse
²CSA Listed

2100 Series Pumps

- For use with 1, 2 or 3 fixture systems
- Fully automatic demand pumps
- Supplies 1.3 or 2.3 gpm (5 or 8.7 lpm)
- Includes fittings for easy installation
Two 1/2" (13 mm) hose barb ports
One 1/2" - 14 straight pipe port
- Install with FLOJET 1740-002 strainer (see page 9)
- The -12 and -919 are IAPMO listed
- The -919 model is CSA listed

Size: 3.75" H x 8.2" L x 3.25" W (95 x 208 x 83 mm)
Shp. Wt: 4.0 lb (1.8 kg)
Inst. Sheet: 81000 127, 81000 260 (-916/-919)

Water System Diagram



Service Parts

Model	Motor	Pump Service Kit	Pressure Switch Assembly
2100-12	02009-004C	21046-057	02095-105
2100-740	02019-001A	21046-057	02095-105
2100-750	02009-004C	21046-121	02095-105
2100-916	02009-043A	21046-057	02095-108
2100-919	02009-008A	21046-187	02095-103



Premium Plus 4.5 gpm (17.0 lpm) Water System Pumps

4325 Series Heavy Duty Water System

- For use with a 1 to 5 gallon (3 to 20 liter) accumulator tank - 4.5 gpm (17.0 lpm)
- Designed for 6 or more fixtures
- Provides quiet operation and smooth flow
- Runs dry without harm to the pump
- Includes plug-in ports for easy installation:
Two 1/2" (13mm) - 14 straight pipe thread ports
Two 3/4" (19mm) hose barb ports
Two 3/4" (19mm) garden hose ports
- Install with new FLOJET strainer (included) to protect pump from debris

Size: 3.75" H x 6.3" W x 9.9" L
(95 x 160 x 252 mm)

Shp. Wt: 6.0 lb (2.8 kg)

Pressure: 40 psi (2.8 bar)

Service kit: 20409 043

Inst. Sheet: 81000 074



Recommended Package

- Use the Pneumatic Bladder Accumulator Tank 18810-0000, for less cycling and smooth flow. See page 8.

Model	Volts	Open Flow gpm (lpm)	Pressure On/Off	Amps @ 10 psi (0.7 bar)	Strainer Included
4325 143	12 dc	4.5 (17)	40psi (2.8 bar)	6.0	Yes
4325 343	24 dc	4.5 (17)	40psi (2.8 bar)	2.5	Yes
4325 043	115 ac	4.5 (17)	40psi (2.8 bar)	2.0	Yes

Jabsco Electric Pump & Faucet

- The answer to running water at the turn of a switch
- Quiet operation electric pump is compact, easy to install, draws only 1.6 amps at 12 Volts and pumps 1 gpm at 3 psi (3.8 lpm at 0.2 bar)
- Stainless steel faucet has a swing spout, easy-to-clean white plastic base and built-in switch to operate
- Switch rating up to 5 amps at 12 Volts
- Available as individual components or pump/faucet combination package
- Pump and faucet have a 3/8" (9.5 mm) hose connection
- Centrifugal pump is not self-priming and must be mounted below water level or tank
- Pump may be screwed directly into water tank
- May be used with fresh or salt water

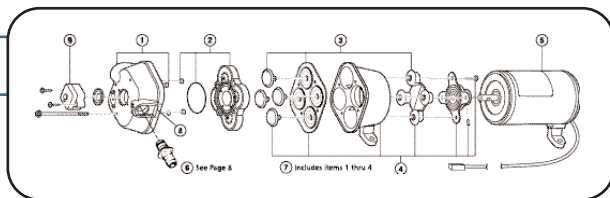


Model	Description	gpm (lpm)	Amps Fuse Size	Weight lb (kg)	Std Ctn
42510-0000	Pump Only	2.0 (7.6)	1.6 (3.0)	3/4 (0.3)	6
42520-0000	Faucet Only	-	-	1/4 (0.1)	6
42530-0000	Pump & Faucet	2.0 (7.6)	1.6 (3.0)	1.0 (0.5)	6

QUAD II Service Parts

* Requires new mounting feet (kit 20717-100A) when used with three-footed Quad pumps.

† Add "R" to motor no. for CE certified model (i.e., R2009-076A).



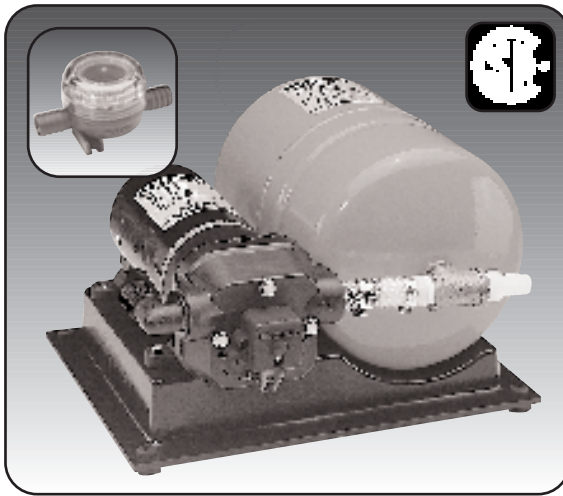
KEY Model	1 Upper Hsng	2 Valve Assy	3 Diaphragm	4 Lower Hsng	5 Motor †	7 Pump Head	8 Side Clips	9 Prsr Switch Kit
4305 144	20404 003	20407 030	20403 040	20419 002	2009 087A	20406 002A	20408 000	2090 118
4325 043	20404 003	20407 030	20403 040	20419 002	2029 091A	20406 002A	20408 000	2090 118
4325 143	20404 003	20407 030	20403 040	20419 002	2009 080A*	20406 002A	20408 000	2090 118
4325 343	20404 003	20407 030	20403 040	20419 002	2019 027A*	20406 002A	20408 000	2090 118

Water System Pumps



High Volume Water System Pumps

High Volume Water System Pumps



2840 Series High Volume Water Pressure System

- Integrated pump and accumulator tank system
- Compact design installs easily in convenient locations
- May be mounted vertically or horizontally
- Supplies 4.5 gpm (17.0 lpm) up to 6 gpm (22.7 lpm) with fully charged tank
- Can run dry without harm
- FDA materials in pump and accumulator tank for drinking water
- Self-priming up to 10ft. (3.1m)
- Includes assorted ports for easy installation
- Accumulator tank has total volume of 1.1 gallon (4.1 liter)
- Install the FLOJET strainer (included) to protect pump from debris

Now there are 3 models to choose from to meet your requirements:

2840 100

4.5 gpm (17 lpm) - 10 valves:

- This unit handles washer/dryer, ice maker, filtered water, two baths, and kitchen.

2840 110

3.5 gpm (13.5 lpm) - 7 valves:

- This deluxe system can handle washer/dryer, ice maker, filtered water, one bath, and a kitchen.

2840 120

3.3 gpm (12.5 lpm) - 5 valves:

- This unit is ideal for ice maker, filtered water, bath, and kitchen.

Model	Volts	Open Flow gpm (lpm)	Pressure Shut Off	Max Amps
2840 100	12V dc	4.5 (17)	40 psi (2.8 bar)	10.0
2840 110	12V dc	3.5 (13.5)	40 psi (2.8 bar)	8.0
2840 120	12V dc	3.3 (12.5)	40 psi (2.8 bar)	7.0
2840 300	24V dc	4.5 (17)	40 psi (2.8 bar)	5.0
2840 000	115V ac	4.5 (17)	40 psi (2.8 bar)	1.5

Size: 7.2" H x 11.3" W x 12.8" D
(191 x 286 x 325 mm)

Shp. Wt: 8.8 lb (4 kg)

Service kit: 20409 043

Inst. Sheet: 81000 290



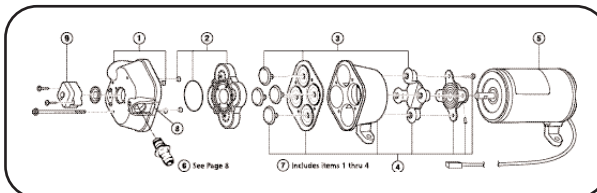
2880 Series - Delivers over 8 gpm (31 lpm)

For added performance, call the factory about the new 2880 Series. These extra high powered systems feature:

- Dual 4.5 gpm (17.0 lpm) pumps to deliver over 8 gpm (31 lpm).
- System cut-off pressure is 45 psi.
- Inlet and outlet ports are 3/4" (19 mm) hose barb for reinforced poly hose.

- The 2880 is available in 12 Volts dc and 24 Volts dc models to service the RV, Bus Conversion and Commercial Coach markets.

Ask your supplier/retailer to order a 12 Volts dc 2880 100A or a 24 Volts dc 2880 300A model for that special high performance application.



Service Parts

Service Kit	Upper Hsng Assy Kit	Check Valve Assy	Lower Housing	Accumulator Tank	Base	Port Kit (2 each)	Pump Head Assembly	Port Clips (2 each)	Pressure Switch
20409 043	20404 003	20407 030	20419 002	20799 000A	20796 000A	20381 022	20406 002A	20408 000	02090 118



Jabsco 36950 Series Pumps

- A direct replacement pump for many early (1975 to 1980) Recreation Vehicles with two or three outlets
- See page 3 for other pumps that can be used in place of this model
- Dependable, easily repaired, and able to run dry for extended periods
- Belt drive and flexible mounts aid noise reduction
- Pump protected against city water pressure by built-in port check valve
- Pulsation dampeners absorb water hammer
- Ports fit 1/2"-5/8" (13-16mm) hose

Size: 36950-2000
8-1/2" H x 5-9/16" W x
6-9/16" L (216 x 141 x
167 mm)

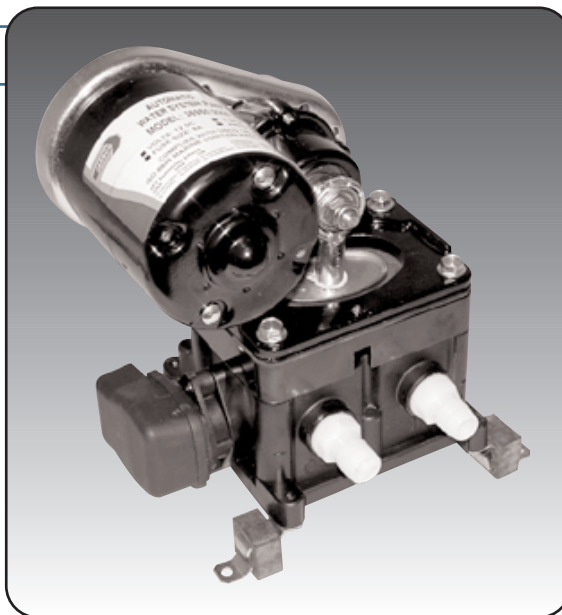
Weight: 10 lb (4.5 kg)

Std Carton: 4

Size: 36950-2010
8-1/2" H x 5-9/16" W x
6-9/16" L
(216 x 141 x 167 mm)

Weight: 10 lb (4.5 kg)

Std Carton: 1



WARNING



Explosion Hazard.
Pumps with AC motors can spark.
Explosion and death can occur. Do no use
where flammable vapors are present.

Model	Volts dc	Open Flow gpm (lpm)	Amps/ Fuse
36950-2000	12	3.0 (11.4)	6.0 (8)
36950-2010	24	3.0 (11.4)	3.0 (4)

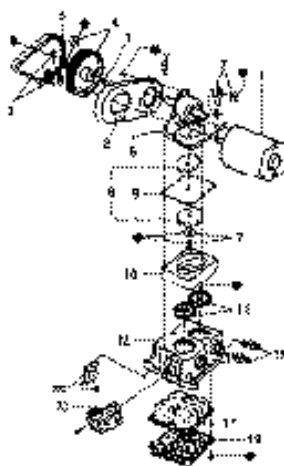
NOTE: New motors may exhibit a slightly higher amp draw than nominal until broken in.

Service Parts

Key	Description Replacement Parts	36950-1 Series	36950-2 Series
1	Motor Kit 12V dc	30200-0000	30200-0000
5	Belt	30022-0000•	30022-0000•
7	Connecting Rod	-	-
9	Diaphragm	30015-0000•	30015-0000•
11	Valve Set	30004-0000†	30004-0000†
12	Base Kit (See †)	35620-1100	44114-1100
13	Pressure Switch	37121-0010	37121-0010
		37121-0000*	37121-0000*
15	Ports Set	37176-0000†	37176-0000•
17	Pulsation Dampener	37178-0000†	44127-1000†
21	Service Kit (See •)	30126-0000	43990-0061

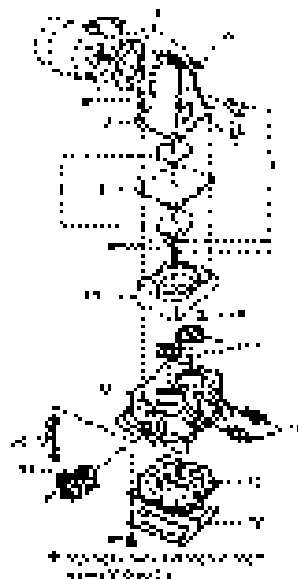
Key	Description Replacement Parts	36970-1 Series	36970-2 Series
1	Motor Kit 12V dc	30201-0000	30201-000
5	Belt	-	-
7	Connecting Rod	30033-0000	30033-0000
9	Diaphragm	30015-0000•	30015-0000•
11	Valve Set	30004-0000†	30004-0000†
12	Base Kit (See †)	35620-1100	44114-1100
13	Pressure Switch	37121-0010	37121-0010
		37121-0000*	37121-0000*
15	Ports Set	37176-0000†	37176-0000•
17	Pulsation Dampener	37178-0000†	44127-1000†
21	Service Kit (See •)	30123-0000	43990-0064

36950-Series



• Indicates items included in Hardware Kit (Key 21)

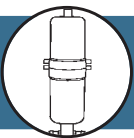
36970-Series



• Indicates items included in Hardware Kit (Key 21)

* Includes Switch and Conversion Kit to mount new type switch onto older style -J and -0000 pumps.

Automatic Water System Pumps



Accumulator Tanks

Install between pump and water heater in main distribution line



Pressurized Accumulator Tank Model 30573

- Compact pneumatic bladder tank is designed for smaller systems and spaces
 - Mounts easily in any position
 - Smooths faucet and shower flow by eliminating pulsations and water hammer for an improved water system
 - Includes both 1/2" (13 mm) hose barb and 1/2" - 14 straight thread snap-in port fittings
 - Tank is pressurized to 10 psi (0.7 bar) and can be fine-tuned to cut-in pressure of pump
 - NSF Listed
 - Meets RVIA regulations
- Size:** 5" dia x 13" high (119 x 325 mm)
5" dia x 9" high (119 x 214 mm)
- Weight:** 1.6 lb (0.7 kg)
1.2 lb (0.5 kg)
- Inst. Sheet:** 81000 584
81000 397

Model	Max Working Pressure psi (bar)	Working Volume Oz/liter
30573 0001	125 (7.1)	32 (1.0 L)
30573 0004	125 (7.1)	21.5 (0.6 L)



Jabsco Model 18810 Pneumatic Bladder Accumulator Tank

- Will smooth flow from faucets and shower, reducing pump cycling and eliminating pulsations and water hammer
 - Water is totally separated from air chamber and metal tank by a bladder and polypropylene tank liner
 - NSF-61 listed for all water applications
 - Volume of tank is 2 gallons (7.8 liters) with a working water volume of about 1 gallon (3.9 liters)
 - Mounts horizontally or vertically, even upside down
 - Includes brackets and band clamps
 - Port is 3/4" NPT (male)
 - Pre-pressurized to 20 psi (1.4 bar)
 - Tank may be fine tuned to cut-in pressure of pump
 - Meets RVIA regulations
- Size:** 8" dia x 12-5/8" high (203 x 320 mm)
- Weight:** 5 lb (2.3 kg)

Model	Max Working Pressure psi (bar)	Working Volume gallon/liter
18810-0000	100 (6.9)	1 (3.9)



Jabsco Model 12573 Accumulator Tank

- Economy model reduces water system pulsation and prevents rapid on/off pump cycling
 - No moving parts
 - Trapped air in tank must be replenished periodically
 - Removable plug in top for draining and winterizing
 - One quart capacity
 - Operating pressure up to 125 psi (7.1 bar)
 - Connects to main water distribution line
 - Tee fitting for 1/2" (13 mm) hose at base of tank
 - Molded of ABS Plastic
- Size:** 5" dia x 13-1/8" high (127 x 330 mm)
- Weight:** 1.5 lb (0.7 kg)

Model	Max Working Pressure psi (bar)	Capacity quart/liter
12573-0000	125 (7.1)	1



Portable RV Waste Pump

- Connects directly to the RV waste outlet
- Eliminates the 3' sewer hose
- Discharge through a garden hose
- Rinse water and back-wash valve
- Remote on/off switch and 6' harness
- Pump tanks empty up to 50'
- Dump tanks to any sewer access
- Easy clean-up and rugged storage case

Designed to greatly improve one of the least desirable functions of the RV experience. Cleanly handle both the black and gray water from your holding tanks with this new self-priming, powerful macerator pump. The pump housing is designed to connect on to the standard 3" sewer adapter. Power leads with plug may

be permanently attached to vehicle, or battery clips may be attached for complete portability.

Note: Some vehicles require an angle adapter for proper fit. Use this product in accordance with EPA Sanitary Regulations.

Model No: 18555 000A

Voltage: 12 Volts DC Nominal

Amp Draw: 16.5 Max (fuse 20A)

Ports: 3/4" NGH (m)
"Garden Hose"

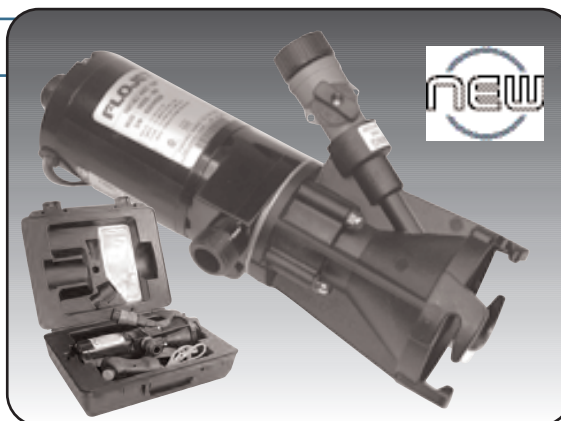
Impeller: "Jabsco Nitrile" compound

Chopper: Stainless Steel

Weight: 6 lb. (2.8 kg)

Case Size: 12" x 13" x 5.5"
(30cm x 32cm x 14cm)

*Patent Pending



Model	Outlet	Max Flow gpm (lpm)	Volts DC	Amp
18555 000A	3/4" NGH	13 (49)	12	16

Note: Thetford outlet requires an adapter

Flojet Series 18550 Macerator Pump

- RV macerator pump can empty a 30 gallon (115 liter) holding tank in 3 minutes
- RV version accepts 3" (75 mm) hose on the inlet port; Jabsco Marine equipped with 1 1/2" (38 mm) hose barb and 1 1/2" (38 mm) male pipe
- Grinds waste into small particles for easy disposal through 1" (25 mm) hose barb outlet
- Self-priming with a flow rate of 13 gpm (49 lpm)

- Pump can be permanently installed for easy holding tank evacuation into a toilet or plumbing clean out access

Weight: 18550 000
18590 1000
18590 1001
5 lb (2.3 kg)

18690 1010
19 lb (6 kg)



Model	Inlet	gpm (lpm) @ 10ft (3m)	Volts	Amps	Fuse/ Breaker
18550 000	RV 3" x Hose barb	13/49	12 dc	16	20
18550 100	RV 3" x Garden hose	13/49	12 dc	16	20
18590 1000	Marine 1-1/2" (38mm)	13/49	12 dc	16	20*
18590 1001	Marine 1-1/2" (38mm)	13/49	24 dc	8	10*
18690 1010	Park 3" (75mm)	13/49	115 Ac	5	T.P.†

*Thermally Protected Motor.

Jabsco Model 37075 Designer Style Electric Toilets

- Jabsco designer styled electric toilets bring a new level of elegance to marine-type toilets
- Sleekly contoured toilets are available in either white or bone china
- Designed to fit snugly against a vertical wall and requires no space below floor
- Skirted vitreous china bowl conceals all plumbing and electrical wiring, for a clean, uncluttered look
- The bowl and full-size seat assembly are ergonomically

designed for comfort

- Toilets are 15-1/2" (39.4cm) wide by 19-1/4" (48.9cm) long and are fitted with contoured, household size seat and lid assemblies

- Available in two heights: The DS-214 Series is a compact 14" (35.6cm) tall and the DS-217 Series is a full size (household height) 17" (43.2cm) tall

- All options include a powerful waste water evacuation pump with built-in macerator

Shp. Wt: 57 lb (25.8 kg).



Model	Type	Colour	Volts dc	Amps	Fuse/ Breaker
37075-0092	DS 214	White	12	10	25
37075-0094	DS 214	White	24	5	15
37075-1092	DS 217	White	12	10	25
37075-3092	DS 217	Bone	12	10	25
37075-1094	DS 217	White	24	5	15
37075-3094	DS 217	Bone	24	5	15

All models equipped with Solenoid valve to control rinse water.



37075-Series
Solenoid
Valve &
Siphon
Breaker



DS-214 &
DS-217 Toilets
Multi-function
Flush Control
Panel



Accessories



Model 1740 Series Inlet Strainers

- Keeps debris and particles from entering any water pump
- Plug-in Quad Port 90° strainer allows for easy installation and compatibility with Flojet pumps
- Threaded bowl makes cleaning quick and easy
- Stainless Steel 40 mesh screen is recommended for fresh water applications.



NEW quick connect strainer for universal applications with Flojet pumps



1740 900

Part No	Inlet	Outlet	Screen
1740 000	3/4" (19mm) Barb	3/4" (19mm) Barb	40 Mesh
1740 002	1/2" (13mm) Barb	1/2" (13mm) Barb	40 Mesh
1740 004	1/2" - 14 Pipe	1/2" - 14 Pipe	40 Mesh
1740 300	Quick Connect	Quad Connect	40 Mesh
1740 375	3/8" NPT (f)	3/8" NPT (f)	40 Mesh
1740 900	Quick Connect	Quad Port 90°	40 Mesh

1740 300

Part No	Inlet	Outlet	Screen
1740 010	3/4" (19mm) Barb	Quad Port 90°	40 Mesh
1740 012	1/2" (13mm) Barb	Quad Port 90°	40 Mesh
1740 014	1/2" - 14 Pipe	Quad Port 90°	40 Mesh
1740 375	3/8" NPT(f)	3/8" NPT(f)	40 Mesh
1740 900	Quick Connect	Quad Port 90°	40 Mesh



Water Pressure Regulators

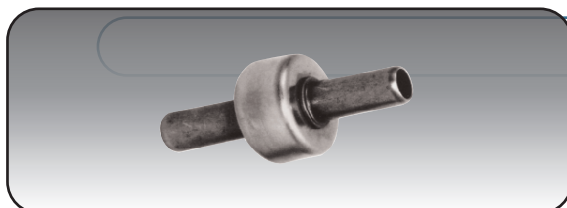
- Protect your RV appliances and pump from damaging pressures of unregulated water hookups
- Reduce high water pressures up to 150 psi (10 bar) down to 45 psi (3.1 bar)
- Built-in backflow preventer
- Easy to install
- Easy-clean in-line filter
- CSA (IAPMO TS 28), NSF-18
- Two models: a permanently installed flush mount model and an in-line model with brass garden hose fittings that connect water entry and garden hose water hookup

Weight: **1750 (Flush)**
6 oz (0.2 kg)
1750 (In-line)
3 oz (0.1 kg)
35471 - 1.5 lb (0.7 kg)

Part No	Inlet	Outlet	Type
01751 145	3/4" GHT	Quick Connect	Flush
01751 245	3/4" GHT	Quick Connect	Flush

Part No	Inlet	Outlet	Type
01750 045	3/4" GHT	3/4" GHT	In-line
01750 145	3/4" GHT	1/2" - 14 Pipe	Flush
01750 245	3/4" GHT	1/2" - 14 Pipe	Flush
35471 0000*	1/2" NPT	1/2" NPT	In-line

*The Model 35471-0000 is set to a pressure of 40 psi.



Also see 01883 000 P. 26

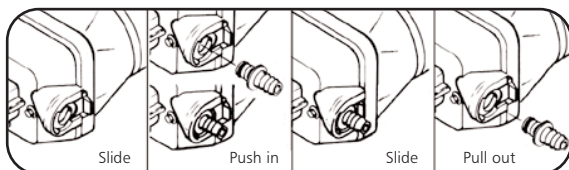
Jabsco High Pressure Check Valve

- When located at the pump outlet, this high pressure check valve protects your pump from the damaging high pressure of unregulated city water connections
- Can be located at the water heater inlet to prevent backflow of hot water into the cold water system and pump
- Ports are sized for 1/2" (13 mm) slip-on hose

Size: 1-1/2" x 4"
(40 x 100mm)
Weight: 1.4 lb (0.1 kg)
Model: **34344-000**



'Quick-Connect' Port System



Snap-in seal tight ports

Quick-Connect Quad port system makes hose removal easy and allows for fast winterizing and system draining. All Quad ports fit directly into pump and are compatible with new Quad II pumps.

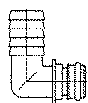
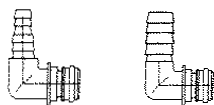
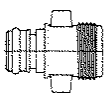
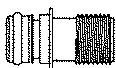
■ Two ports are included in each Quick-Connect package.

Installation:

1. Move slide back.
2. Push port all the way in.
3. Move slide forward to lock.

Removal:

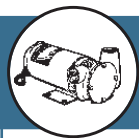
1. Move slide back.
2. Pull port out of pump body.



Part Number	Port	Size	Type	O-Ring Metal	Use
20381 000	Quad	1/2" (13mm) - 14 Pipe	Straight	EPDM	Potable
20381 034	Quad	1/2" (13mm) - 14 Pipe	Straight	Viton	Chemicals
20381 026	Quad	10/13 mm Hose Barb	Straight	EPDM	Potable
20381 002	Quad	1/2" (13mm) Hose Barb	Straight	EPDM	Potable
20381 015	Quad	1/2" (13mm) Hose Barb	Straight	Viton	Chemicals
20381 016	Quad	1/2" (13mm) Hose Barb	Straight	Buna	Oil Resistant
20381 003	Quad	5/8" (16mm) Hose Barb	Straight	EPDM	Potable
20381 020	Quad	5/8" (16mm) Hose Barb	Straight	Buna	Oil Resistant
20381 033	Quad	5/8" (16mm) Hose Barb	Straight	Viton	Chemicals
20381 006	Quad	3/4" (19mm) Hose Barb	Straight	EPDM	Potable
20381 012	Quad	3/4" (19mm) Hose Barb	Straight	Buna	Oil Resistant
20381 014	Quad	3/4" (19mm) Hose Barb	Straight	Viton	Chemicals
20381 007	Quad	Garden Hose Adapter		EPDM	Potable
20381 013	Quad	Garden Hose Adapter		Buna	Oil Resistant
20381 032	Quad	Garden Hose Adapter		Viton	Chemicals
20381 008	Quad	1/2" (13mm) - 14 Pipe	90° Elbow	EPDM	Potable
20381 036	Quad	1/2" (13mm) - 14 Pipe	90° Elbow	Viton	Chemicals
20381 024	Quad	10/13 mm Hose Barb	90° Elbow	EPDM	Potable
20381 009	Quad	1/2" (13mm) Hose Barb	90° Elbow	EPDM	Potable
20381 017	Quad	1/2" (13mm) Hose Barb	90° Elbow	Viton	Chemicals
20381 019	Quad	1/2" (13mm) Hose Barb	90° Elbow	Buna	Oil Resistant
20381 010	Quad	3/4" (19mm) Hose Barb	90° Elbow	EPDM	Potable
20381 018	Quad	3/4" (19mm) Hose Barb	90° Elbow	Viton	Chemicals
20381 031	Quad	3/4" (19mm) Hose Barb	90° Elbow	Buna	Oil Resistant

Note: 10/13mm ports are stepped to be used with 10mm or 13mm hose and may also be used with 3/8" I.D. hose. 5/8" hose barb, 90° elbow is not available. 1/2" - 14 pipe is similar to 1/2" BST.

Quad Port Fittings



Engine Oil Change System

- Gives you quick, easy and clean oil changes at the flip of a switch.
- Removes oil and sludge through the dipstick tube, making engine oil changes quick and easy without getting under the engine.
- Supplied with 8' of 1/4" (6.5mm) oil and heat resistant suction tube.
- Capped pouring spout is provided for emptying the tank.
- Available in 12 Volt dc with 7' (2.1m) cord with alligator clips.

Size: 19-1/2" H x 12" W x 8L
Probe: 1/4" (6.5mm) OD x 8' (240cm) L
Weight: 3.5 lb (1.6 kg)



Model	Volts dc	Amps	Maximum Capacity
01785 000A	12	4	14 Qt.

Four simple steps for fast, clean oil changes



1 Start engine and run for 5 minutes to heat the oil

2 Remove the dipstick and insert the suction probe

3 Attach the power cord clips to the engine battery
Red = positive
Black = negative

4 Activate pump with switch on motor to drain crankcase

Compact Magnetic Drive Centrifugal Sealless Heater Pump

- Delivers 3.9 gpm (15 lpm) at 4 ft (1.2 m) of head, and is designed primarily as a hot water circulation pump for RV and bus heating systems
- When plumbed to engine cooling system it will pump heated coolant water to remote radiator to warm living spaces while underway
- All plastic pump head is compatible with engine anti-freeze and capable of handling fluid temperatures up to 212° F (100° C)
- 3/4" (19mm) barbed ports
- Ignition protected motor rated for continuous duty up to maximum brush life of 2,500 hours

Size: 4" L x 5" W x 5" H
Shp. Wt: 0.6 Lb (0.26 kg)
Std Carton: 1



Model	Volts dc	Amps	Fuse/ Breaker
59510-0012	12	1.2	2
59510-0024	24	0.7	1

Oil Drain and Heater Pumps



Water Products



Bottled Water Dispensing System

Bottled Water Dispenser

Applications

- Designed for dispensing bottled water to refrigerators, ice machines and dispensing faucets, coffee machines, beverage dispensers, vending machines and carts
- For fresh bottled water when travelling or at home
- Available in 12 Volts dc and 115 Volts ac

Special Features

- Positive displacement, double diaphragm pump design
- Compact size for easy mounting
- Float switch for automatic shut-off, when bottle is empty

- Built-in check valve to prevent back flow
- Universal seal cap and adjustable dip tube will accommodate most bottle sizes 2.5 to 5 gallons (9.4 to 30 liters)
- 0.75" (6 mm) ID x 20' (6.1 m) discharge hose included
- UL and CUL listed

Size: 3" H x 5-1/2" W x 7-1/2" D
(76 x 140 x 190 mm)

Weight: 5.6 net lbs. (2.5 kg)

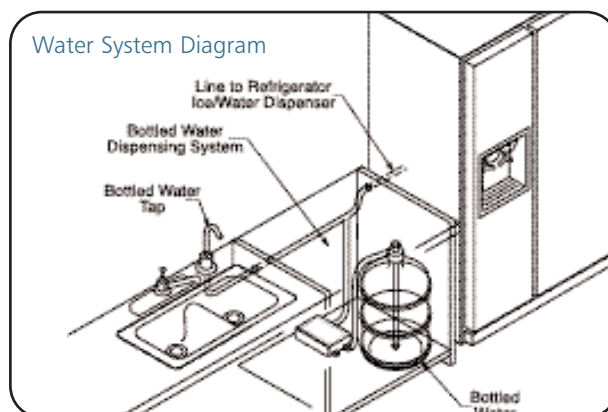
Shp. Wt: 8.5 net lbs. (3.9 kg)

Model	Volts	Flow gpm (lpm)	Pressure psi (bar)	Amps	Cord
BW3000A	12dc	1.0 (3.8)†	40 (2.8)	3.0	12" (30cm) lead wires
BW1000A	115ac	1.0 (3.8)†	40 (2.8)	0.5	6' (1.8 m) cord & plug

† Discharge Hose: 1/4" (6.5mm) x 20' (6.1 m)



Water System Diagram





Product Number Index

Product	Page	Product	Page	Product	Page	Product	Page
320	18	1825 015	23	20408 000	3,5,6	91010 256A	22
321	18	1825 022	23	20409 043	1,3,4,5,6	B1819 020	24
350	18	18550 1000	9	20419 001	3	B1828 100	24
413	19	18550 1001	9	20419 002	5,6	B1828 300	24
805-Q	19	18550 1010	9	3406143	2	B1829 020	24
830	19	1821 008	22	3406343	2	8035 100	12
1821 004	21	18555 000A	9	3416143	2	8135 100	12
01750 045	10	18690 1000	9	20420 040	10	8046 100	12
01750 145	10	1870 001	24	20796 000A	6	8055 100	12
01750 245	10	1870 002	24	20799 000A	6	BW1000A	16
01751 145	10	1881 000	25	2090 104	3	BW3000A	16
01751 245	10	18810-0000	8	2090 118	5	C100	17
01770 100	1	1882 000	25	2100 014A	15	C101	17
017885 000A	15	1882 007	25	2100-12	4	C102	17
02009 004C	4	1883 000	25	2100-740	4	C103	17
02009 004C	4	1884 000	25	2100-916	4	LF122 002	2
02009 008A	4	1884 010	25	2100-919	4	LF122 202	2
02009 043A	4	1888 010	26	21046-057	4	R1819 020	24
02019 001A	4	1888 011	26	21046-121	4	R1828 100	24
02090 118	6	1888 020	26	21046-187	4	R1828 300	24
02095 105	4	1888 103	26	2840 000	6	R1829 020	24
02095 108	4	1888 105	26	2840 100	6	R2580 100A	1
03526 144	2	1888 108	26	2840 110	6	R2580 300A	1
04306 500	3	1888 110	26	2840 120	6	R3426 148	2
04406 043	3	1890 000	25	2840 300	6	R3426-348	2
04406 143	3	1890 001	25	30004-0000	7	R3526 344	2
08035 100	12	1890 010	25	30015-0000	7	R4306 501	3
08046 100	12	1891 004	25	30022-0000	7	R4406 343	3
08055 100	12	1892 002	25	30033-0000	7	R4515 743A	1
08055 200	12	1892 003	25	30123-0000	7	R4525 743A	1
08135 100	12	1892 005	25	30126-0000	7	R6806 145	1
12573-0000	8	1892 008	25	30200-0000	7	R6806 345	1
1740 000	10	2009 076	3	30201-0000	7	V14	20
1740 002	10	2009 080A	5	30573 0001	8	V16	20
1740 003	10	2009 087A	5	30573 0004	8	V20	20
1740 004	10	20095 103	4	34344-0000	9	V20R	20
1740 010	10	2019 024A	3	35471 0000	9	V20R-24	20
1740 012	10	2019 027A	5	35620 1100	7	V33	20
1740 014	10	2029 087A	3	36950 2000	7	V33R	20
1740 375	10	2029 091A	5	36950 2010	7	V42	20
1740 900	10	20381 000	28	37075-0092	9	V42R	20
1800 000	27	20381 002	28	37075-0094	9	W104	20
1800 001	27	20381 003	28	37075-1092	9	W107	20
1810 003	22	20381 006	28	37075-1094	9	W114	20
1810 005	22	20381 007	28	37075-3092	9	W118PK	20
1810 006	22	20381 008	11	37075 3094	9	W-131C	20
1811 000	21	20381 009	11	37121 0000	7	W139	20
1811 002	21	20381 010	11	37121 0010	7	W1818 100	24
1811 003	21	20381 012	11	37176 0000	7	W1818 500	24
1812 000	21	20381 013	11	37178 0000	7	W1828 100	24
1815 000	23	20381 014	11	42510-0000	5	W1828 1000	24
1815 002	23	20381 015	11	42520-0000	5	W1828 300	24
1815 004	23	20381 016	11	42530-0000	5		
1820 000	22	20381 017	11	4305 144A	4		
1820 001	22	20381 018	11	4325 043	5		
1820 002	22	20381 019	11	4325 143	5		
1820 003	22	20381 020	11	4325 343	5		
1820 004	22	20381 022	6	43990 0013	13		
1820 005	22	20381 024	11	43990 0014	13		
1820 006	22	20381 026	11	43990 0015	13		
1820 007	22	20381 031	11	43990 0016	13		
1821 000	21	20381 032	11	43990-0061	7		
1821 001	21	20381 033	11	43990-0064	7		
1821 002	21	20381 034	11	44114-1100	7		
1821 003	21	20381 036	11	44127-1000	7		
1822 000	21	20403 040	3,5	45900 1000	14		
1822 007	21	20404 000	3	45903 0002	14		
1822 008	21	20404 003	5,6	45960 0000	14		
1825 000	23	20404 009	3	45960 0001	14		
1825 001	23	20406 001A	3	59500-0012	15		
1825 003	23	20406 002A	5,6	59500-0024	15		
1825 004	23	20406 008A	3	62022-4002	13		
1825 005	23	20406 040A	2	62026-4002	13		
1825 006	23	20407 030	3,5,6	63042 0062	13		